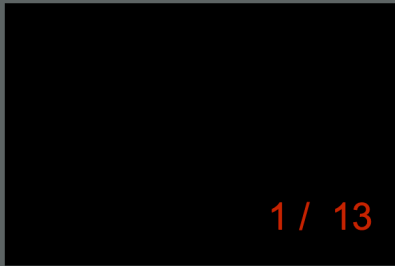
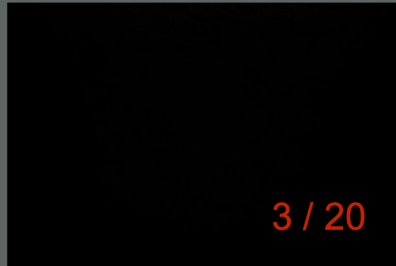


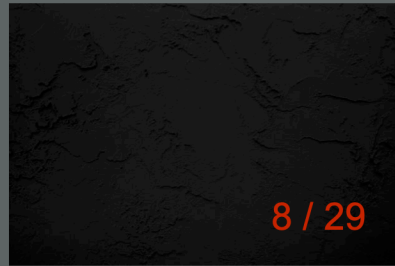
Shadows



Zone 0 (-5 Stops)
Pure black (crushed blacks)



Zone I (-4 Stops)
Nearly black. No detail

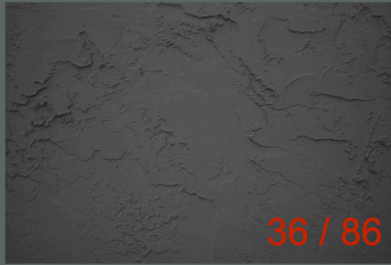


Zone II (-3 Stops)
A hint of detail

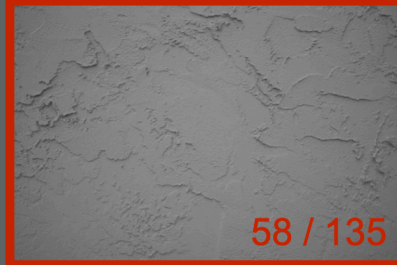


Zone III (-2 Stops)
Good shadow detail

Mid-Tones



Zone IV (-1 Stop)
Dark tone



Zone V
Medium Gray
(18% reflectance)

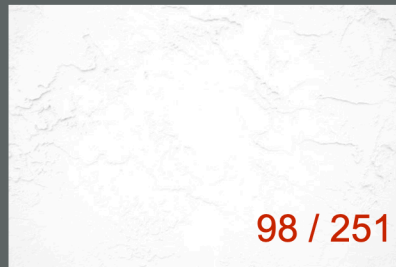


Zone VI (+1 Stop)
Light tone

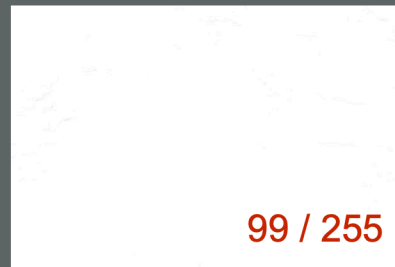
Highlights



Zone VII (+2 Stops)
Light tone. Some texture with little detail



Zone VIII (+3 Stops)
Hint of detail. Starting to wash out



Zone IX (+4 Stops)
Nearly white / washed out



Zone X (+5 Stops)
Pure white